



Air/Oxygen Blenders

A Blender for Every Purpose



Accurate, economical and tailored to your needs

Bio-Med Devices' full range of blenders makes it easy for you to select the one that's perfect for your setting and requirements. Each of Bio-Med Devices' blenders delivers unsurpassed accuracy, dependability and economy in a convenient, lightweight package.

A Choice of Configurations

Bio-Med Devices offers low-, mid- and high-flow air/oxygen blenders in many different configurations. You're certain to find the blender that's right for you, whether it's for the NICU, MRI suite, transport operations or ICU. We can even configure our air/oxygen blenders to OEM specifications and provide private labels.

A Range of Fittings, Ports and Flowmeters

Bio-Med Devices blenders come standard with air and oxygen DISS input fittings, but air and oxygen NIST fittings are also available. Depending on the part number, one, two or three output ports are provided. Standard fittings for these ports are oxygen DISS, but 1/8 NPT or push-connect-style fittings for tubing are also available. We also offer

several models with flowmeters permanently mounted, creating a versatile, compact package. Flowmeters are currently available in 1, 3.5, 15 and 70 LPM.

Visit Us Online

To see our complete line and get additional guidance on selecting a blender to meet your needs, visit www.biomeddevices.com.

Air/Oxygen Blenders

A blender for every purpose

Blender Output Flows & Port Configurations

Models	Left Output Port	Bottom Output Port	Right Output Port	Bleed ¹
Low Flow 2003 Series	3-30 lpm (no bleed) 0-30 lpm (with bleed)	3-30 lpm (no bleed) 0-30 lpm (with bleed)	0-30 lpm (with bleed)	3 lpm required for flows below 3 lpm
Mid Flow 2000 Series	6-50 lpm (no bleed) 0-50 lpm (with bleed)	6-50 lpm (no bleed) 0-50 lpm (with bleed)	0-50 lpm (with bleed)	6 lpm required for flows below 6 lpm
High/Low Flow 2001 & 2004 Series	15-120 lpm (no bleed) 2-108 lpm (with bleed)	15-120 lpm (no bleed) 2-108 lpm (with bleed)	2-108 lpm (with bleed)	12 lpm required for flows below 15 lpm
High Flow 2002 Series	15-120 lpm (no bleed)	15-120 lpm (no bleed)	N/A	No Bleed

¹ The output on the right side controls the bleed required when using the blender for low flows. The bleed is activated by either connecting to this port, turning a knob, if present, on this port, or rotating a flowmeter, if present, on this port.

Specifications

Oxygen Concentration Range	21 – 100%
Number of Output Ports	1 to 3 depending on configuration
Accuracy	±3% full scale
Size	3.6W x 5.4H x 4.6D in (9.2 x 13.7 x 11.7 cm) ²
Weight	3.2 lbs (1.45 kg) ²

²Varies by part number. Go to www.biomeddevices.com for specific configurations with part numbers

Optional Accessories

Part #	Item
20062	Hose kit (2' air & 2' O ₂ supply hose & coupler)
20063	Hose kit (3' air & 3' O ₂ supply hose & coupler)
2006	Hose kit (10' air & 10' O ₂ supply hose & coupler)
2013BW	Bracket, wall mount
2013B	Bracket, pole mount for 1" pole
2013BH	Bracket, pole mount for BMD heavy duty stand (2" pole)
2013BFEU	Bracket, horizontal 25mm rail
2013FR	Bracket, Fairfield rail
2013BVR	Bracket, vertical 7mm rail

Below are just a few of the configurations available.

To learn more, visit www.biomeddevices.com, or call the number below.



MID-FLOW
with bleed switch
and bottom output



HIGH/LOW FLOW
with three outputs



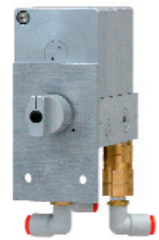
LOW FLOW
with 15 lpm flowmeter,
bleed switch and
bottom output



LOW FLOW
with two side
outputs



HIGH FLOW
with single
bottom output



OEM



Bio-Med Devices Inc.
61 Soundview Road
Guilford, CT 06437
USA
Telephone: 1-800-224-6633 or 203-458-0202
Fax: 203-458-0440
Website: www.biomeddevices.com
E-mail: custserv@biomeddevices.com

Distributed by



Specifications subject to change without notice.

0508REV00

NEO₂ BLEND

Air/Oxygen Blender for the NICU



Save gas, time and money

The NEO₂ BLEND is a blender specifically designed for the NICU. It offers Bio-Med Devices' famous performance and economy in a unique design that simplifies operation, conserves gas and keeps the blender ready to use at a moment's notice.

Dual, Integrated Flowmeters

The Bio-Med Devices NEO₂ BLEND is an air/oxygen blender with integrated flowmeters specifically designed for use in the NICU. The 0-15 lpm flowmeter on the left can be used to connect to a resuscitation bag. The flowmeter on the right, which can be ordered in 0-1.5, 0-3.5 or 0-1.0 LPM, can be used to connect an infant nasal cannula.

Easy Off, Easy On

The NEO₂ BLEND's unique features let you turn the bleed required for low flows on and off merely by pushing in and rotating the right-hand flowmeter. You save time and reduce aggravation, because there are no parts to disconnect or misplace. And the device is always ready to use, because turning it back on is quick and simple with just a turn of the flowmeter. This

means you can conserve gas by turning off the bleed when either the cannula or blender is not in use.

NEO₂ BLEND

Air/Oxygen Blender for the NICU

Ordering Information

For countries using green oxygen labeling

Part #	Item
2003FFI	NEO ₂ BLEND with 15 lpm & 1.0 lpm flowmeters (green oxygen labeling)
2003FF	NEO ₂ BLEND with 15 lpm & 3.5 lpm flowmeters (green oxygen labeling)
2003FF15	NEO ₂ BLEND with 15 lpm & 15 lpm flowmeters (green oxygen labeling)
2003FFA	NEO ₂ BLEND with 15 lpm & 3.5 lpm flowmeters (green oxygen labeling) & bottom output

For countries using white oxygen labeling

Part #	Item
2003FFEU	NEO ₂ BLEND with 15 lpm & 3.5 lpm flowmeters (white oxygen labeling)
2003FFE5	NEO ₂ BLEND with 15 lpm & 15 lpm flowmeters (white oxygen labeling)
2003FFEA	NEO ₂ BLEND with 15 lpm & 3.5 lpm flowmeters (white oxygen labeling) & bottom output
2007	Standard input fittings on our blenders are DISS air and oxygen. If you want NIST input fittings on your blender instead of DISS, add this part number to your order.

We encourage you to visit our website, www.biomeddevices.com, to see these blenders along with our other products.

Specifications

Oxygen Concentration Range	21 – 100%
Number of Ports	2 or 3
Left Flowmeter Range	3-15 lpm (1-15 lpm if bleed is on)
Right Flowmeter Range	0.0-1.0 lpm, 0.0-3.5 LPM. or 1-15 lpm (with 3 lpm bleed on)
Accuracy	±3% full scale
Size	8.1W x 6.5H x 4.6D in (20.6 x 16.5 x 11.7 cm)
Weight	4.1 lbs (1.86 kg)

Optional Accessories

Part #	Item
20062	Hose kit (2' air & 2' O ₂ supply hose & coupler)
20063	Hose kit (3' air & 3' O ₂ supply hose & coupler)
2006	Hose kit (10' air & 10' O ₂ supply hose & coupler)
2013BW	Bracket, wall mount
2013B	Bracket, pole mount for 1" pole
2013BH	Bracket, pole mount for BMD heavy duty stand (2" pole)
2013BEU	Bracket, horizontal 25mm rail
2013FR	Bracket, Fairfield rail
2013BVR	Bracket, vertical 7mm rail



Bio-Med Devices Inc.
61 Soundview Road
Guilford, CT 06437
USA
Telephone: 1-800-224-6633 or 203-458-0202
Fax: 203-458-0440
Website: www.biomeddevices.com
E-mail: custserv@biomeddevices.com



Specifications subject to change without notice.

Distributed by

0508REV00

BIO-MED DEVICES TEST LUNGS

Durable, Reusable and with a Disposable Price!!



Infant/Pediatric
500 ml
Catalog #1022

Adult
1 liter
Catalog #1020

Pliable Foam
Liner

Heavy Duty Recoil
Band

Soft, Durable
Rubber Body

Rigid
Insert

Order a Case of 10 From Your Bio-Med Devices Dealer or
From Bio-Med Devices Directly



Bio-Med Devices, Inc.
61 Soundview Road, Guilford, CT 06437

Do not get foam liner wet.
May be gas sterilized.
Do not steam autoclave.
Caution: This product contains natural rubber
(latex) which may cause allergic reactions.

Voice: 203-458-0202 Fax: 203-458 0440
www.biomeddevices.com



Clear acrylic – digitally enhanced for clarity

BIO-MED DEVICES

ZEE-FRAME

Instructions for use:

1. Interlock to the mattress edge at the head or the side of the patient. For straight through type patient wyes, two Zee-Frames, one on each side, may be used to support the inspiratory and expiratory tubes.
2. To adjust the height and angle of the Zee-Frame to accommodate different sizes and positions of patients, loosen the knob, set the desired position and then, while holding the frame in position, tighten the knob.
3. Insert the tubing in the appropriate slot.
4. Connect the patient to the breathing circuit and make any final adjustments.
5. To clean, use soap or mild non-abrasive detergent. Do not use solvents that may damage the acrylic.
6. **DO NOT HEAT STERILIZE.** The Zee-Frame may be cold sterilized, gas sterilized, or pasteurized.

Specifications:

Catalog #: 2100
Material: clear acrylic
Height: variable from 5 ½" to 8 ½"
Base: 7" x 4 ½"
Mattress: up to 1 ½" thick
Tubing size: 3/8", ½", 1", 9mm, 10mm
Shipping Wt.: 1 lb.

Warranty:

One year against defects in materials and workmanship.



Bio-Med Devices, Inc.
61 Soundview Road, Guilford, CT 06437 U.S.A.
203-458-0202, Fax 203-458-0440
www.biomeddevices.com